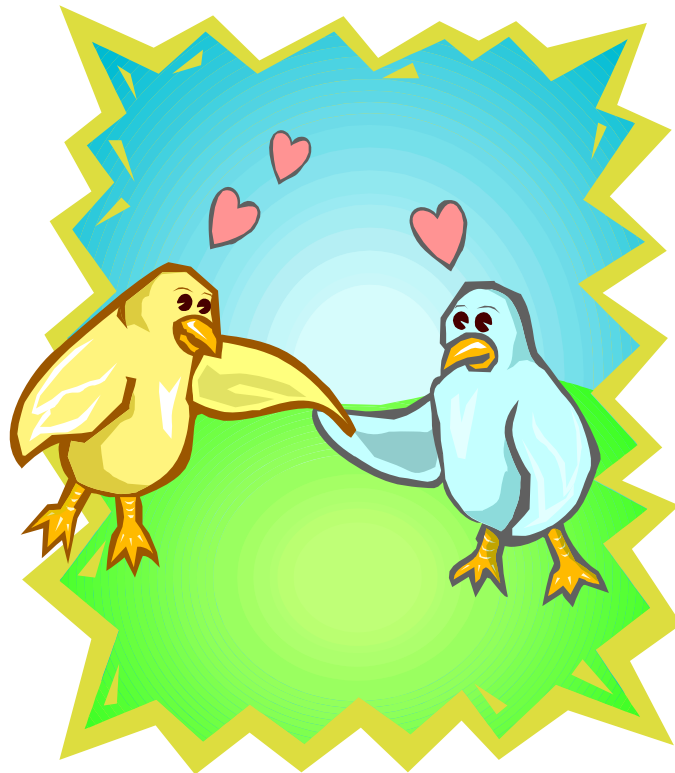


RICE LANE JUNIOR SCHOOL

Policy for Relationships and Sex Education



E Waterman
January 2004
Updated 2007
Updated 2009

Policy for Relationships and Sex Education

What is Relationships and Sex Education?

Relationships and Sex Education is 'a lifelong learning about physical, moral and emotional development. It is about the understanding of the importance of marriage and family life, stable and loving relationships, respect, love and care. It is also about the teaching of sex, sexuality and sexual health' (SRE ED Guidance 2000).

According to the above Guidance

- Relationship and Sex education is essential if young people are to make responsible and well informed decisions
- It helps and supports young people through their physical, emotional, and moral development
- It helps young people learn to respect themselves and others and move with confidence from childhood through adolescence into adulthood
- It helps pupils develop the skills and understanding they need to live confident, healthy and independent lives.

Aims of Relationships and Sex Education

Rice Lane Junior School believes that sex and relationships education in this school will be developmental and a foundation for further development in the secondary school. It is agreed that this is best achieved through a **whole school approach** which will ensure that our policy is appropriately set for the age and maturity of our pupils built on year on year and embedded within our PSHE scheme of work.

We aim to:

- Involve parents and carers
- Give staff appropriate training and support
- Ensure pupils views are listened to
- Use local data such as teenage pregnancy rates to inform activities

The school will work towards these aims in partnership with the parents and governors. The aim of the relationships and sex education policy is to clarify the content and manner in which sex and relationships education will be delivered in this school.

Other school policies that have relevance to sex and relationships education are;

- PSHE and Citizenship
- Equal Opportunities
- Child Protection
- Behaviour and Discipline
- Special Needs
- Drug Education
- Science

Content of Relationships and Sex Education Programme

The relationships and sex education programme will:

- Provide information that is relevant and appropriate to the age, developmental stage and maturity levels of the pupils
- Develop skills of assertiveness, communication and effective dialogue in relationships
- Foster self esteem, positive self-image and confidence
- help pupils make informed decisions, not be pressured into things that they do not want to do
- promote the spiritual, moral, cultural, emotional and physical development of the pupils
- Prepare pupils for the opportunities, responsibilities and experiences of adult life
- Offer opportunities to challenge prejudice and explore and develop their own and other people's attitudes and values.

The content of the relationships and sex education programme will be delivered via two areas of the curriculum

1. Through National Curriculum Science where children are required to learn:-

- That the life processes common to humans and other animals include nutrition, growth and reproduction
- The main stages of the human life cycle

2. Through Unit 5 of each year's PSHE/SEAL programme entitled 'Relationships and Relationships and Sex Education' (taught in the summer term).

Material will be from a variety of sources in Years 3 and 4 as well as the Channel 4 Living and Growing Scheme. In Years 5 and 6 it will be based on the Channel 4 Living and Growing Scheme, using other PSHE resources where appropriate. All of the teaching will take place within the context of healthy relationships.

In Year 3, lessons will focus on:

- Exploring aspects of growing up
- The arrival of a new baby
- Helping with the new baby
- The importance of healthy friendships
- Celebrating their own achievements

In Year 4, lessons will focus on:

- Exploring their own family relationships
- Recognizing that not all families are the same
- Understanding the changes that can affect families i.e. divorce/separation and loss
- The similarities and differences between males and females

In year 5, lessons will focus on:

- Exploring the physical and emotional changes during puberty
- Discussing the choices we face over which we can have increasing control as we grow up
- Examining the whole process of life cycles and reproduction including conception and birth
- Discussing the importance of loving, caring relationships between friends, and between couples and the value of the family and relationships within it
- Investigating feelings, roles and responsibilities in a relationship
- Focusing on the development and needs of the baby in the womb, the needs of the baby and the mother before the birth, and the inheritance of physical characteristics
- Enabling children to make comparisons with their own development and to reflect upon their own relationships in positive ways

In Year 6, lessons will focus on:

- Reviewing the physical and emotional changes that take place for girls during puberty. The information dealt with is not only from the point of view of girls but also in terms of what boys need to know
- Reviewing the physical and emotional changes that take place for boys during puberty. The information dealt with is not only from the point of view of boys but also in terms of what girls need to know
- Problems commonly faced by boys and girls are given consideration
- Examining the development of relationships
- Exploring stereotypes in the context of body image and the media
- Exploring the media's portrayal of relationships and sex.
- Enabling children to make comparisons with their own development and to reflect upon their own relationships in positive ways

The full PSHE scheme of work is available for reference, from the PSHE Co-coordinator.

Entitlement

Rice Lane Junior School is committed to equal opportunities provision in all aspects of school life. All teaching methods and resources used will support this commitment.

Implementation

Delivery will be:

- In class groups
- As part of a planned programme of PSHE and Citizenship
- through planned aspects of science
- through circle time

NB Single sex groups will be used at one point during year six when the girls will have the opportunity to handle sanitary wear.

Techniques

Techniques which involve pupils' full participation will be used, such as:

- The use of ground rules
- The use of distancing techniques
- The use of a question box
- The use of reflection
- Referring back to a parent when staff feel it is appropriate to do so
- The use of consultation and evaluation forms

Organisation

Sex and Relationships Education will be co-ordinated by the PSHE Co-ordinator, Elizabeth Waterman, in close co-operation with the Headteacher.

Assessment, Reporting and Recording

Teacher Assessment will be based on children's attitudes, values and interpersonal skills and children's learning through questions asked during and at the end of topics and will be included in assessment of progress in PSHE in end of term reports. Pupils will be asked to fill in a consultation sheet before the unit of work to assess knowledge and to inform planning. Pupils will be asked to fill in an evaluation form at the end of the topic to assess understanding of the work taught and to aid planning for the next year. Class teachers will feed back to the PSHE Co-ordinator at the end of the unit of work.

Working with parents and carers

Rice Lane Junior School is committed to working with parents and carers. All parents and carers are invited to attend annual parents' meetings where they are shown aspects of the DVD that will be shown, told about lesson content and have the opportunity to ask any questions. Year 5 and Year 6 Parents are asked to fill out a short questionnaire about the work their children participated in at the end of the summer term.

Pupils' Withdrawal Procedures

Under the 1993 Education Act, pupils can be withdrawn by their parents, from part of the sex and relationships education programme that is outside the compulsory elements of sex and relationships education in the National Science Curriculum. Parents wishing to exercise this right are invited to contact the Headteacher who will explore the concerns and the possibilities of adjusting the programme or approach. She will discuss the possible impact that withdrawal may have on the pupil and she will talk with the parents/carers about the pupil's possible negative experiences or feelings that may result from exclusions and ways which these can be minimised. Once a pupil has been withdrawn they cannot participate in relationships and sex education lessons until the request of withdrawal has been removed. This request needs to be in writing addressed to the Headteacher.

Confidentiality

Pupils will be made aware that some information cannot be held confidential, and made to understand that if certain disclosures are made certain action will ensue.

Disclosure or suspicion of possible abuse

Rice Lane Junior School has a Child Protection Policy and procedure for dealing with child sexual abuse based on the LEA guidelines and recommendations. This policy is available on request.

Answering difficult questions

Sometimes an individual child will ask an explicit or difficult question in the classroom. We shall attempt to answer questions in a sensitive, age-appropriate, open, frank and matter of fact way. However difficult or explicit questions do not have to be answered directly. Teachers will use their own discretion in these situations and can refer to the Headteacher or parents if they are concerned.

Provision for pubertal pupils

Sanitary Disposal Units are located in the cubicles of the Year 6 girls' toilets. Girls requiring sanitary protection should go to the school office or to a member of staff with whom they feel comfortable with.

Outside agencies

Outside agencies may be used to support and assist the teachers in the development of the classroom based work.

Complaints Procedures

Any complaints about the sex and relationships education curriculum should be made to the Headteacher who will report to the governors via the link governor.

HIV/AIDS Policy

The school follows the procedure outlined by the City Council with regard for supporting pupils or staff infected or affected by HIV/AIDS (see relevant document).

Dissemination

All staff members and governors will receive a copy of this policy. Several copies are available for loan from the school office on request. A short summary of this policy will be included in the school prospectus.

Evaluation, Monitoring and Review of the Policy

The PSHE scheme and this policy were updated in May 2009 after consultation with staff parents and governors.

The policy will be reviewed in May 2011, using a consultative process, which identifies teacher, pupil and parent feedback on the sex and relationships education programme.

A summary will be given in the annual report to the parents. The Co-ordinator will have a link role between the school and governing body, via Curriculum Committee meetings.